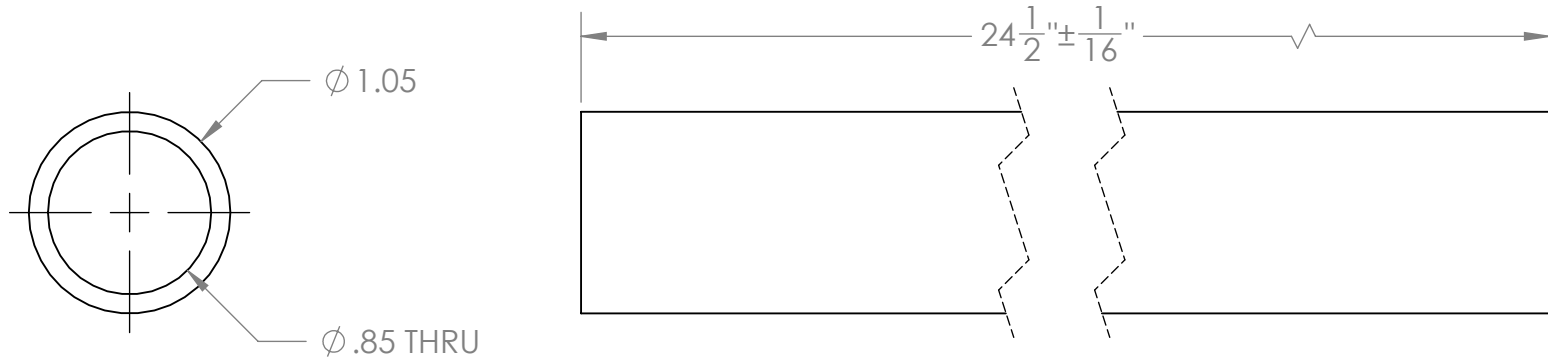
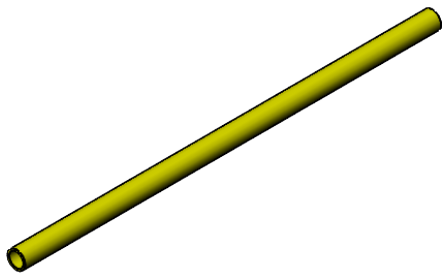


| REVISION HISTORY | | | |
|------------------|----------------|-----------|----------|
| REV. | DESCRIPTION | DATE | DRAWN BY |
| 1 | ORIGINAL PRINT | 3/15/2023 | E. SCIME |



*** SEE CAD FOR ADDITIONAL TOOLPATH INFO***



| | | | | | | | |
|---|--|-------------------------------------|------------|---|------------------|----------------------------|-----------------|
| UNLESS OTHERWISE SPECIFIED: | | COMMENTS: | | | | | |
| DIMENSIONS ARE IN INCHES | | DUAL DIMENSIONS ARE IN MILLIMETERS. | | | | | |
| TOLERANCES: FRACTIONAL $\pm 1/16$ ANGULAR: MACH $\pm 1^\circ$ ANGULAR: BEND $\pm 5^\circ$ ONE PLACE DECIMAL ± 0.1 TWO PLACE DECIMAL ± 0.01 THREE PLACE DECIMAL ± 0.005 FOUR PLACE DECIMAL ± 0.0005 | | BREAK ALL SHARP EDGES. | | TITLE: TRUSS LONG YELLOW PIPE | | | |
| MATERIAL YELLOW HIPS | | CHECKED | NAME NM | DATE 3/17/23 | SIZE A | DWG. NO. am-5107 | REV 1 |
| FINISH DEBURRED | | ENG APPR. | | MFG APPR. | | SCALE: 1:1 | |
| DO NOT SCALE DRAWING | | Q.A. | | | | SHEET 1 OF 1 | |